

DL-1G-POE-INJECTOR

SPD - for data, signalling and telecommunications lines / ICT / Ethernet and PoE - compact

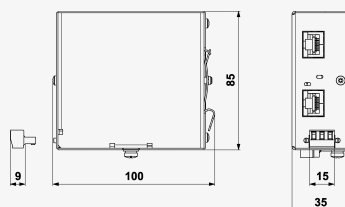
SPD for Ethernet 1 Gb/s (Cat.6) with PoE

RJ45 + SV connectors

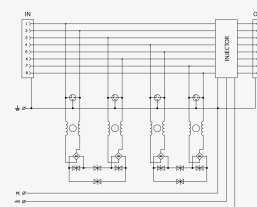
- two-stage surge protection device for Ethernet protection, combined with PoE protection including the injector
- installed at the entry point into the building object, near the equipment to be protected, at the interface of the LPZ 0 and LPZ 1 and higher zones
- for use in Ethernet Cat. 6 lines with PoE (Power over Ethernet), operating in A and B modes, to protect them from peak overvoltages



Product dimensions



Basic circuit diagram



Parameter name		Parameter value
Type of SPD		D1,C2,C3
Location of SPD		ST 1+2+3
Mounting		DIN rail 35 mm
Maximum operating voltage	U_c	8.50 V DC
Maximum operating voltage POE	U_c	58.00 V DC
Nominal load current per core at 25 °C	I_L	0.5 A
Treshold frequency core-core	f	250.00 MHz
Insertion attenuation at treshold frequency		1.20 dB
D1 total discharge current (10/350 μ s) cores-PE	I_{Total}	2.00 kA
C2 nominal discharge current (8/20 μ s) per core	I_n	0.15 kA
C2 total discharge current (8/20 μ s) cores-PE	I_{Total}	10.00 kA
C2 voltage protection level mode (POE) at $I_n = 1,25$ kA	U_c	90.00 V
C2 voltage protection level mode core-PE at $I_n = 1,25$ kA	U_p	700.00 V

C2 voltage protection level mode core-core at In	U_p	70.00 V
C3 voltage protection level mode (POE) at 1 kV/ μ s	U_p	80.00 V
C3 voltage protection level mode core-PE at 1 kV/ μ s	U_p	500.00 V
C3 voltage protection level mode core-core at 1 kV/ μ s	U_p	80.00 V
Response time core-core	t_a	1 ns
Response time core-PE	t_a	100 ns
Connection (input - output)		RJ 45/RJ 45
Degree of protection		IP 30 (without connectors IP 10)
Range of ambient temperatures (min/max)		-25 / 50 °C
Humidity		15 - 85 %
According to standard		EN 61643-21+A1,A2:2013, IEC 61643-21+A1,A2:2012
Customs tariff number		85363030
EAN		8595090566205
Order number		A06620