

DMHF-015/1-RB

SPD - for data, signalling and telecommunications lines / I&C / Specials - for BUS systems (high speed rate)

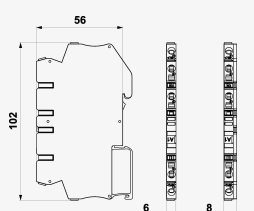
Coarse and fine surge protection of 2-core high-speed signalling lines

coupling impedance (R – resistance), screwless terminals

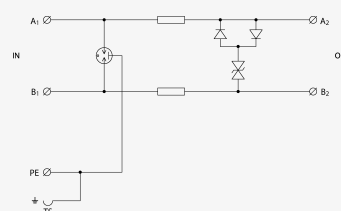
- coarse and fine surge protection of 2-core high-speed signalling lines
- installation close to protected device
- for protection of communication interfaces of I&C, MaR systems, electronic security and fire detection systems, etc. (mainly for RS-485 interfaces) against impact of surge voltage
- coarse and fine surge protection in differential mode (core – core) and common mode (core – PE)



Product dimensions



Basic circuit diagram



Parameter name		Parameter value
Type of SPD		C2,C3
Location of SPD		ST 2+3
Mounting		DIN rail 35 mm
Nominal voltage	U_n	15.00 V DC
Maximum operating voltage	U_c	15.00 V AC
Maximum operating voltage	U_c	22.00 V DC
Nominal load current	I_L	0.500 A
Treshold frequency core-core	f	70.00 MHz
Serial resistance per core	R	2.20 Ω
D1 impulse discharge current (10/350 μ s) per core	I_{imp}	0.50 kA

D1 total discharge current (10/350 μ s) cores-PE	I_{Total}	1.00 kA
C2 nominal discharge current (8/20 μ s) per core	I_n	5.00 kA
C2 total discharge current (8/20 μ s) cores-PE	I_{Total}	10.00 kA
C2 voltage protection level mode core-PE at I_n	U_p	350.00 V
C2 voltage protection level mode core-core at I_n	U_p	36.00 V
C3 voltage protection level mode core-PE at 1 kV/ μ s	U_p	500.00 V
C3 voltage protection level mode core-core at 1 kV/ μ s	U_p	28.00 V
Response time core-core	t_a	1 ns
Response time core-PE	t_a	100 ns
Connection (input - output)	screwless terminals/screwless terminals	
Cross-section of connected conductors solid (min)	0.08 mm ²	
Cross-section of connected conductors solid (max)	4.00 mm ²	
Cross-section of connected conductors stranded (min)	0.08 mm ²	
Cross-section of connected conductors stranded (max)	2.50 mm ²	
Degree of protection	IP 20	
Range of ambient temperatures (min/max)	-40 / 70 °C	
According to standard	EN 61643-21+A1,A2:2013, IEC 61643-21+A1,A2:2012	
ETIM Class	EC001625	
Customs tariff number	85363010	
EAN	8595090562900	
Order number	A06290	