

# DMHF-006/1-RB

## SPD - for data, signalling and telecommunications lines / I&C / Specials - for BUS systems (high speed rate)

Surge protection for 2-core high-speed floating signalling lines

coupling impedance (resistance), screwless terminals

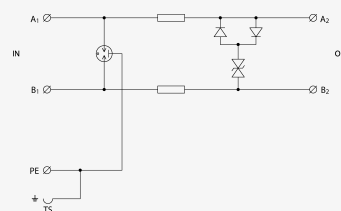
- coarse and fine surge protection of 2-core high-speed signalling lines
- installation close to protected equipment
- for protection of communication interfaces, mainly the RS-485 lines, of I&C, electronic security and fire detection systems, etc. against impact of surge voltage
- coarse and fine surge protection in differential mode (core – core) and coarse surge protection in common mode (core – PE)



Product dimensions



Basic circuit diagram



Parameter name	Parameter value
Type of SPD	C2,C3
Location of SPD	ST 2+3
Mounting	DIN rail 35 mm
Nominal voltage $U_n$	6.00 V DC
Maximum operating voltage $U_c$	6.00 V AC
Maximum operating voltage $U_c$	8.50 V DC
Nominal load current $I_L$	0.500 A
Threshold frequency core-core $f$	70.00 MHz
Serial resistance per core $R$	2.20 $\Omega$
D1 impulse discharge current (10/350 $\mu$ s) per core $I_{imp}$	0.50 kA

D1 total discharge current (10/350 $\mu$ s) cores-PE	$I_{Total}$	1.00 kA
C2 nominal discharge current (8/20 $\mu$ s) per core	$I_n$	5.00 kA
C2 total discharge current (8/20 $\mu$ s) cores-PE	$I_{Total}$	10.00 kA
C2 voltage protection level mode core-PE at $I_n$	$U_p$	350.00 V
C2 voltage protection level mode core-core at $I_n$	$U_p$	26.00 V
C3 voltage protection level mode core-PE at 1 kV/ $\mu$ s	$U_p$	500.00 V
C3 voltage protection level mode core-core at 1 kV/ $\mu$ s	$U_p$	14.00 V
Response time core-core	$t_a$	1 ns
Response time core-PE	$t_a$	100 ns
Connection (input - output)	screwless terminals/screwless terminals	
Cross-section of connected conductors solid (min)	0.08 mm <sup>2</sup>	
Cross-section of connected conductors solid (max)	4.00 mm <sup>2</sup>	
Cross-section of connected conductors stranded (min)	0.08 mm <sup>2</sup>	
Cross-section of connected conductors stranded (max)	2.50 mm <sup>2</sup>	
Degree of protection	IP 20	
Range of ambient temperatures (min/max)	-40 / 70 °C	
According to standard	EN 61643-21+A1,A2:2013, IEC 61643-21+A1,A2:2012	
ETIM Class	EC001625	
Customs tariff number	85363010	
EAN	8595090560647	
Order number	A06064	