

DM-024/1-RB

SPD - for data, signalling and telecommunications lines / I&C / ST2+3 (DM) - terminal block

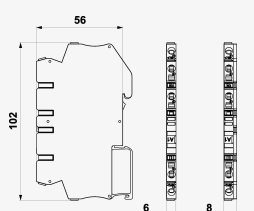
Surge protection for 2-core signalling networks

coupling impedance (resistance), screwless terminals

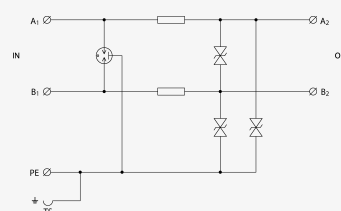
- coarse and fine surge protection for 2-core signalling networks
- installation close to protected equipment
- for protection of communication interfaces, mainly the RS-485 lines, of I&C, electronic security and fire detection systems, etc. against impact of surge voltage
- coarse and fine surge protection in differential mode (core – core) and common mode (core – PE)



Product dimensions



Basic circuit diagram



Parameter name	Parameter value
Type of SPD	C2,C3
Location of SPD	ST 2+3
Mounting	DIN rail 35 mm
Nominal voltage	U_n 24.00 V DC
Maximum operating voltage	U_c 25.00 V AC
Maximum operating voltage	U_c 36.00 V DC
Nominal load current	I_L 0.500 A
Threshold frequency core-core	f 4.00 MHz
Serial resistance per core	R 2.20 Ω
D1 impulse discharge current (10/350 μ s) per core	I_{imp} 0.50 kA

D1 total discharge current (10/350 μ s) cores-PE	I_{Total}	1.00 kA
C2 nominal discharge current (8/20 μ s) per core	I_n	5.00 kA
C2 total discharge current (8/20 μ s) cores-PE	I_{Total}	10.00 kA
C2 voltage protection level mode core-PE at I_n	U_p	65.00 V
C2 voltage protection level mode core-core at I_n	U_p	50.00 V
C3 voltage protection level mode core-PE at 1 kV/ μ s	U_p	45.00 V
C3 voltage protection level mode core-core at 1 kV/ μ s	U_p	45.00 V
Response time core-core	t_a	1 ns
Response time core-PE	t_a	1 ns
Connection (input - output)	screwless terminals/screwless terminals	
Cross-section of connected conductors solid (min)	0.08 mm ²	
Cross-section of connected conductors solid (max)	4.00 mm ²	
Cross-section of connected conductors stranded (min)	0.08 mm ²	
Cross-section of connected conductors stranded (max)	2.50 mm ²	
Degree of protection	IP 20	
Range of ambient temperatures (min/max)	-40 / 70 °C	
According to standard	EN 61643-21+A1,A2:2013, IEC 61643-21+A1,A2:2012	
ETIM Class	EC001625	
Customs tariff number	85363010	
EAN	8595090560593	
Order number	A06059	