

DM-012/1-RB

SPD - for data, signalling and telecommunications lines / I&C / ST2+3 (DM) - terminal block

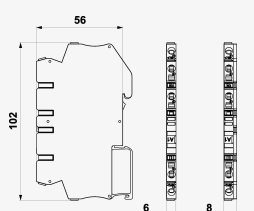
Surge protection for 2-core signalling networks

coupling impedance (resistance), screwless terminals

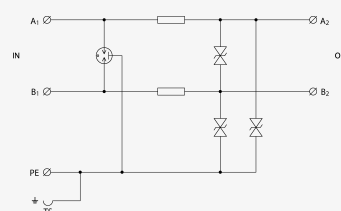
- coarse and fine surge protection for 2-core signalling networks
- installation close to protected equipment
- for protection of communication interfaces, mainly the RS-485 lines, of I&C, electronic security and fire detection systems, etc. against impact of surge voltage
- coarse and fine surge protection in differential mode (core – core) and common mode (core – PE)



Product dimensions



Basic circuit diagram



| Parameter name | | Parameter value |
|--|-----------|-----------------|
| Type of SPD | | C2,C3 |
| Location of SPD | | ST 2+3 |
| Mounting | | DIN rail 35 mm |
| Nominal voltage | U_n | 12.00 V DC |
| Maximum operating voltage | U_c | 11.00 V AC |
| Maximum operating voltage | U_c | 16.00 V DC |
| Nominal load current | I_L | 0.500 A |
| Threshold frequency core-core | f | 2.00 MHz |
| Serial resistance per core | R | 2.20 Ω |
| D1 impulse discharge current (10/350 μ s) per core | I_{imp} | 0.50 kA |

| | | |
|---|--|----------|
| D1 total discharge current (10/350 μ s) cores-PE | I_{Total} | 1.00 kA |
| C2 nominal discharge current (8/20 μ s) per core | I_n | 5.00 kA |
| C2 total discharge current (8/20 μ s) cores-PE | I_{Total} | 10.00 kA |
| C2 voltage protection level mode core-PE at I_n | U_p | 40.00 V |
| C2 voltage protection level mode core-core at I_n | U_p | 28.00 V |
| C3 voltage protection level mode core-PE at 1 kV/ μ s | U_p | 20.00 V |
| C3 voltage protection level mode core-core at 1 kV/ μ s | U_p | 20.00 V |
| Response time core-core | t_a | 1 ns |
| Response time core-PE | t_a | 1 ns |
| Connection (input - output) | screwless terminals/screwless terminals | |
| Cross-section of connected conductors solid (min) | 0.08 mm ² | |
| Cross-section of connected conductors solid (max) | 4.00 mm ² | |
| Cross-section of connected conductors stranded (min) | 0.08 mm ² | |
| Cross-section of connected conductors stranded (max) | 2.50 mm ² | |
| Degree of protection | IP 20 | |
| Range of ambient temperatures (min/max) | -40 / 70 °C | |
| According to standard | EN 61643-21+A1,A2:2013, IEC 61643-21+A1,A2:2012 | |
| ETIM Class | EC001625 | |
| Customs tariff number | 85363010 | |
| EAN | 8595090560586 | |
| Order number | A06058 | |