

DL-ISDN RJ45

SPD - for data, signalling and telecommunications lines / ICT / Telecommunications

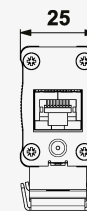
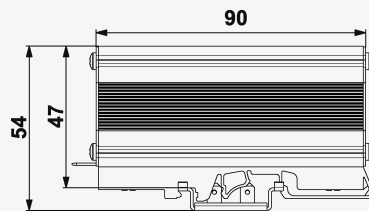
Surge protection for ISDN telecommunication line

RJ45 sockets

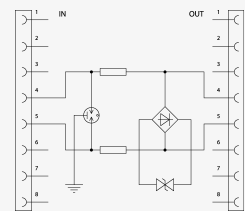
- combination of coarse and fine protection for ISDN lines
- for protection of one pair of ISDN line in telecommunication equipment
- in the scope of delivery: universal plastic adapter for mounting on DIN rail and GND 2 holder



Product dimensions



Basic circuit diagram



Parameter name	Parameter value	
Type of SPD	C2,C3	
Location of SPD	ST 2+3	
Mounting	DIN rail 35 mm	
Maximum operating voltage	U_c	86.00 V AC
Maximum operating voltage	U_c	121.00 V DC
Serial resistance per core	R	6.80 Ω
C2 nominal discharge current (8/20 μ s) per core	I_n	2.50 kA
Nominal load current	I_L	0.060 A
C2 voltage protection level mode core-PE at I_n	U_p	300.00 V
C2 voltage protection level mode core-core at I_n	U_p	270.00 V
C3 voltage protection level mode core-PE at 1 kV/ μ s	U_p	400.00 V
C3 voltage protection level mode core-core at 1 kV/ μ s	U_p	180.00 V
Response time core-core	t_a	1 ns
Response time core-PE	t_a	100 ns

Connection (input - output)	RJ 45/RJ 45
Degree of protection	IP 30 (without connectors IP 10)
Range of ambient temperatures (min/max)	-25 / 50 °C
Humidity	15 - 85 %
According to standard	EN 61643-21+A1,A2:2013, IEC 61643-21+A1,A2:2012
ETIM Class	EC000943
Customs tariff number	85363010
EAN	8595090533825
Order number	A03382

SALTEK s.r.o., Drážďanská 561/85, 400 07 Ústí nad Labem, CZ | +420 475 655 511 | info@saltek.cz | www.saltek.eu
Technická podpora: 800 818 818 | podpora@saltek.cz

13.04.2026 -
20:25:54