

DA-275-DF25-S

SPD - for low voltage / SPD type 3 / With RFI filter

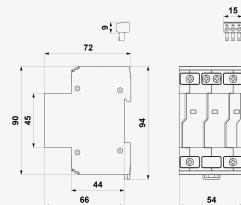
Surge protection with RFI filter

visual and remote fault signalling

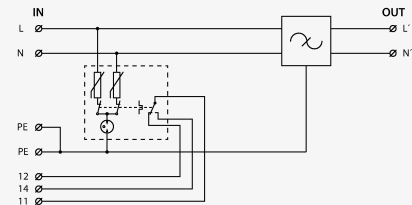
- surge protection with integrated RFI filter
- installation to LV installations, close to protected equipment
- for protection of power lines of I&C, electronic security and fire detection systems, etc. against impact of surge voltage and RF disturbance



Product dimensions



Basic circuit diagram



Parameter name		Parameter value
Type of SPD		T3
Mounting		DIN rail 35 mm
Nominal voltage	U_n	230.00 V AC
Maximum operating voltage	U_c	275.00 V AC
Nominal load current	I_L	25.000 A
Type of network		TN TT
Maximum overcurrent protection		25 A gL/gG or C 25 A
Short-circuit current rating	I_{SCCR}	6.0 kA
Residual current	I_{PE}	0.750 mA
Filter attenuation at 1 MHz (50 Ω /50 Ω) symmetrical		30 dB
Filter attenuation at 1 MHz (50 Ω /50 Ω) unsymmetrical		30 dB
Test voltage L-N	U_{oc}	6.0 kV
Test voltage L+N-PE	U_{oc}	10.0 kV
Test voltage N-PE	U_{oc}	6.0 kV
Voltage protection level mode L-N	U_p	1.40 kV
Voltage protection level mode L-PE	U_p	1.00 kV

Voltage protection level mode N-PE	U_p	1.00 kV
Response time L-N	t_a	25 ns
Response time N-PE	t_a	100 ns
TOV 5 s L-N		335 V
TOV 5 s L-PE		440 V
TOV characteristic (TOV 5 s)		withstand
TOV 120 min L-N		440 V
TOV 120 min L-PE		335 V
TOV characteristic (120 min)		withstand
TOV 200 ms L-PE		1 455 V
TOV 200 ms N-PE		1 200 V
TOV characteristic (TOV 200 ms)		safe failure
Cross-section of connected conductors solid (min)		0.75 mm ²
Cross-section of connected conductors solid (max)		10.00 mm ²
Cross-section of connected conductors stranded (min)		0.75 mm ²
Cross-section of connected conductors stranded (max)		10.00 mm ²
Cross-sectional area of conductors with ferrule (min)		0.75 mm ²
Cross-section of connected conductors with ferrule (max)		10.00 mm ²
Cross-section of remote indication conductors solid (max)		1.5 mm ²
Cross-section of remote indication conductors stranded (max)		1.5 mm ²
Fault indication		red indication field
Remote indication		potential-free change-over contact
Degree of protection		IP 20C (installed)
Range of ambient temperatures (min/max)		-40 / 80 °C
Humidity		5 - 95 %
According to standard		EN IEC 61643-01:2025+A11:2025, EN IEC 61643-11:2025
ETIM Class		EC000942
Customs tariff number		85363030
EAN		8595090576693
Order number		A07669

SALTEK s.r.o., Drážďanská 561/85, 400 07 Ústí nad Labem, CZ | +420 475 655 511 | info@saltek.cz |
www.saltek.eu
Technická podpora: 800 818 818 | podpora@saltek.cz

20.05.2026 -
22:54:29