

FLP-PV1000/Y

SPD - for DC and PV / SPD PV type 1 / MOV

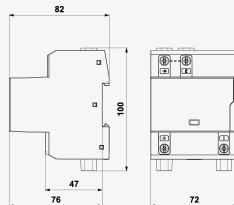
Lightning current arrester and surge arrester for PV systems

visual fault signalling

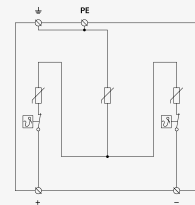
- varistor lightning current arrester and surge arrester in 'Y' connection
- for protection of PV systems on the roofs, where the separating spark-over distance is not kept (connection to LPS)
- maximum continuous operating voltage for PV application: $UCPV \geq 1.2 \times UOC\ STC$



Product dimensions



Basic circuit diagram



Parameter name	Parameter value
Type of SPD	PV T1, PV T2
Mounting	DIN rail 35 mm
Maximum operating voltage mode +/-PE, -/PE	U_{CPV} 1 050.00 V DC
Short-circuit current rating	I_{SCPV} 10 000 A DC
Residual current mode +/-PE, -/PE	I_{PE} 1.000 mA AC
Residual current mode +/-PE, -/PE	I_{PE} 0.010 mA DC
Total discharge current (10/350 μ s)	$I_{Total(10/350)}$ 12.50 kA
Lightning impulse current (10/350 μ s)	I_{imp} 6.25 kA
Total discharge current (8/20 μ s)	$I_{Total(8/20)}$ 80.00 kA
Nominal discharge current (8/20 μ s)	I_n 20.00 kA
Maximum discharge current (8/20 μ s)	I_{max} 40.00 kA
Voltage protection level mode +/-	U_p 3.80 kV
Voltage protection level mode +/-PE, -/PE	U_p 3.80 kV
Response time	t_a 25 ns
Cross-section of connected conductors solid (min)	4.00 mm ²
Cross-section of connected conductors solid (max)	35.00 mm ²
Cross-section of connected conductors stranded (min)	2.50 mm ²

Cross-section of connected conductors stranded (max)	25.00 mm ²
Fault indication	red indication field
Degree of protection	IP 20
Range of ambient temperatures (min/max)	-40 / 80 °C
According to standard	EN 61643-31, IEC 61643-31
ETIM Class	EC001457
Customs tariff number	85363090
EAN	8595090542018
Order number	A04201

SALTEK s.r.o., Drážďanská 561/85, 400 07 Ústí nad Labem, CZ | +420 475 655 511 | info@saltek.cz | www.saltek.eu
Technická podpora: 800 818 818 | podpora@saltek.cz

09.04.2026 -
07:12:23