

# FLP-PV1500/YS

## SPD - for DC and PV / SPD PV type 1 / MOV

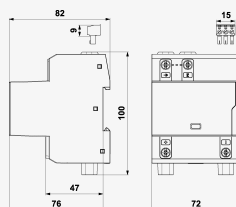
Lightning current arrester and surge arrester for PV systems

visual fault signalling, remote fault signalling

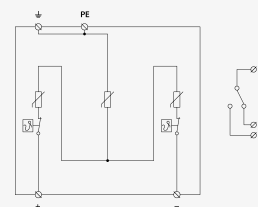
- varistor lightning current arrester and surge arrester in 'Y' connection
- for protection of PV systems on the roofs, where the separating spark-over distance is not kept (connection to LPS)
- maximum continuous operating voltage for PV application:  $UC_{PV} \geq 1.2 \times U_{OC\ STC}$



Product dimensions



Basic circuit diagram



Parameter name		Parameter value
Type of SPD		PV T1, PV T2
Mounting		DIN rail 35 mm
Maximum operating voltage mode +/-PE, -/PE	$U_{CPV}$	1 500.00 V DC
Short-circuit current rating	$I_{SCPV}$	10 000 A DC
Residual current mode +/-PE, -/PE	$I_{PE}$	0.100 mA AC
Residual current mode +/-PE, -/PE	$I_{PE}$	0.010 mA DC
Total discharge current (10/350 $\mu$ s)	$I_{Total(10/350)}$	12.50 kA
Lightning impulse current (10/350 $\mu$ s)	$I_{imp}$	6.25 kA
Total discharge current (8/20 $\mu$ s)	$I_{Total(8/20)}$	80.00 kA
Nominal discharge current (8/20 $\mu$ s)	$I_n$	20.00 kA
Maximum discharge current (8/20 $\mu$ s)	$I_{max}$	40.00 kA
Voltage protection level mode +/-	$U_p$	5.40 kV
Voltage protection level mode +/-PE, -/PE	$U_p$	5.40 kV
Response time	$t_a$	25 ns
Cross-section of connected conductors solid (min)		4.00 mm <sup>2</sup>
Cross-section of connected conductors solid (max)		35.00 mm <sup>2</sup>

Cross-section of connected conductors stranded (min)	2.50 mm <sup>2</sup>
Cross-section of connected conductors stranded (max)	25.00 mm <sup>2</sup>
Cross-section of remote indication conductors solid (max)	1.5 mm <sup>2</sup>
Cross-section of remote indication conductors stranded (max)	1.5 mm <sup>2</sup>
Fault indication	red indication field
Remote indication	potential-free change-over contact
Remote indication contacts	250V/0,5A AC,250V/0,1A DC
Degree of protection	IP 20
Range of ambient temperatures (min/max)	-40 / 80 °C
According to standard	EN 61643-31, IEC 61643-31
ETIM Class	EC001457
Customs tariff number	85363090
EAN	8595090541974
Order number	A04197