

# CP-40-BOX

## ICCP device

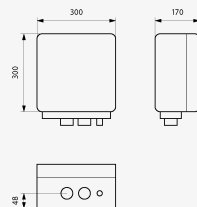
AC diverter combined with SPD for suppression of AC voltage induced to pipelines at proximity of HV/VHV distribution lines

SPD for Cathodic Corrosion Protection System

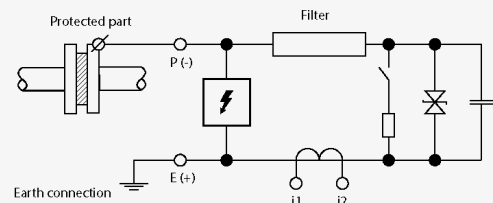
- combines an AC current diverter and a SPD in one enclosure
- AC diverter leads AC currents to earth, so it eliminates the negative influence of induced AC voltages on the protected steel pipe lines. AC corrosion currents can appear on the pipe lines installed in parallel to high voltage overhead lines.
- SPD part protects the cathodic protection system against direct or indirect lightning strokes up to 100 kA (10/350  $\mu$ s)
- conducts AC currents up to 40 A to ground but doesn't affect the function of the cathodic protection system nor the leakage signal of 10 kHz
- more CP-40 devices can be connected in parallel to reach higher current (80, 120 and more Amps)



Product dimensions



Basic circuit diagram



Parameter name		Parameter value
Maximum continuous DC operating voltage (P-E)	$U_{max}$	18 V
Maximum leakage current at $U_{max}$ (P-E)	$I_L$	1.0 mA
Lightning impulse current	$I_{imp}$	100.00 kA
Nominal discharge current (8/20 $\mu$ s)	$I_n$	100.00 kA
Maximum peak AC current 1 s / 50 Hz (P-E)	$I_{max}$	400 A
Maximum continuous AC current 50 Hz (P-E)	$I_A$	40 A
Current transformer ratio		100 : 1
Degree of protection		IP 65
Range of ambient temperatures (min/max)		-25 / 80 °C

Dimensions	300 x 300 x 170 mm
Mounting	surface on the desk
Customs tariff number	85363030
EAN	8595090553465
Order number	A05346

SALTEK s.r.o., Dráždanská 561/85, 400 07 Ústí nad Labem, CZ | +420 475 655 511 | [info@saltek.cz](mailto:info@saltek.cz) | [www.saltek.eu](http://www.saltek.eu)  
Technická podpora: 800 818 818 | [podpora@saltek.cz](mailto:podpora@saltek.cz)

03.04.2026 -  
08:29:39